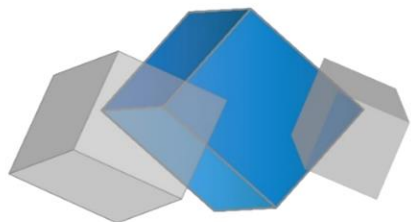


# CATALOG

PREMIUM  
MODULAR  
HOMES



STEELHOUS.ES

**MODULAR HOUSES AND CONSTRUCTIONS**

---

We look into the future!

---

[WWW.STEELHOUS.ES](http://WWW.STEELHOUS.ES) | WE LOOK INTO THE FUTURE!





# Dear clients,

We are pleased to present this catalog, which is the culmination of our many months of work.

STEELHOUS Modular houses & Constructions is a premium company offering modern solutions in the field of modular constructions. Our offer is directed to both retail and business clients.

Thanks to our hard work, we have developed sales channels in 13 countries around the world. We are characterized by the high quality of materials and the ease of their installation. Customers appreciate our professionalism and continuous development, and we do our best to ensure that our company reaches every corner of the world. We set a new quality in modular house systems.

Our mission is to create a friendly and safe place to live.

# Contents

## PAGES

04  
06  
08  
10  
12  
14  
16  
18  
20  
22  
24  
26  
28  
30  
32  
34  
36  
38  
40  
42  
44  
46  
  
48  
50  
52  
  
54

## HOUSES

MTB ONE  
MTB ONE WHITE EPS  
MTB ONE PLUS  
MTB ONE PLUS WHITE  
MTB FOUR  
MTB FIVE  
MTB SIX  
MTB SIX PLUS  
MTB SEVEN  
MTB SEVEN WHITE  
MTB A  
MTB 15  
MTB 30  
TINY HOUSE  
TINY HOUSE DOUBLE  
MTB T  
MTB T WHITE  
MARINA MODULE  
MOBILE HOME L  
ROW HOUSE  
SERIA UNIVERSAL  
MOBILE HOME PREMIUM

## FOR BUSINESS

MICRO HOTEL ROOM  
HOTEL MODULE  
MEDICAL MODULE

## REALIZATIONS



# STEELHOUS MTB ONE



## Parameters:

HOUSE AREA: 35 sqm with a mezzanine 15 sqm

### HOUSE DIMENSIONS - EXTERNAL

WIDTH: 4,94 m

LENGTH: 6,91 m

HEIGHT: 4,92 m

ROOF ANGLE: 18°



THE HOUSE IS AVAILABLE FOR LIVING ALL YEAR ROUND.







The **STEELHOUS MTB One** model is a combination of elegance and functionality. It is a house with an area of 35 sqm. A large terrace window makes the entire living room filled with sunlight, and its location allows for a comfortable exit to the garden. The house has a mezzanine that can be converted into a bedroom. This will allow you to separate the day zone from the night zone, without the need to add additional square meters. A stylish terrace canopy is an optional extra it allows not only to obtain a bit of shade on sunny days, but also adds charm and attractiveness. MTB One is a timeless model that always matches the surrounding climate. It allows us to be multifunctional in a relatively small space.



# STEELHOUS MTB ONE WHITE EPS



## Parameters:

HOUSE AREA: 35 sqm with a mezzanine 15 sqm

### HOUSE DIMENSIONS - EXTERNAL:

WIDTH: 4,94 m

LENGTH: 6,91 m

HEIGHT: 4,92 m

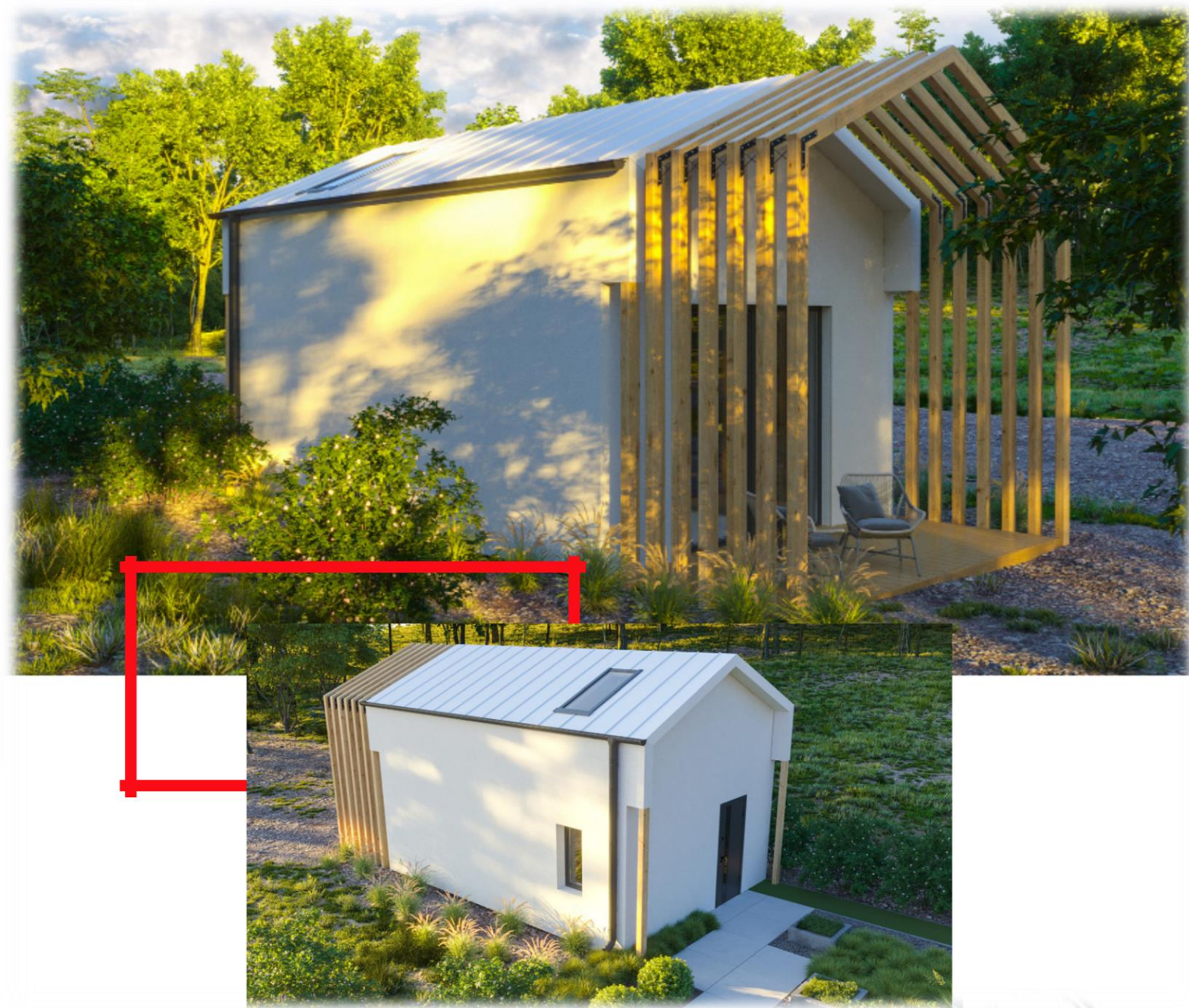
ROOF ANGLE: 18°



THE HOUSE IS AVAILABLE FOR LIVING ALL YEAR ROUND.







**STEELHOUS MTB ONE EPS** is a model created on the basis of the MTB ONE house. The new version is characterized by white plaster, which allows the facade to be arranged in any color chosen by the customer. It has a large, glazed living room that illuminates the entire area of the house. There is also an exit to the garden behind the glass. A cozy bedroom located on the entire mezzanine surface is definitely something special. In addition, a small but functional bathroom is everything you could want from a home. A place made of the highest quality materials to spend unforgettable moments in life.



# STEELHOUS MTB ONE PLUS



STEELHOUSES

MODULAR HOUSES AND CONSTRUCTIONS

## Parameters:

HOUSE AREA: 35 sqm with a mezzanine 15 sqm

### HOUSE DIMENSIONS - EXTERNAL:

WIDTH: 4,94 m

LENGTH: 6,91 m

HEIGHT: 4,92 m

ROOF ANGLE: 18°



THE HOUSE IS AVAILABLE FOR LIVING ALL YEAR ROUND.







**STEELHOUS MTB One Plus** is a richer version of MTB One. The house is distinguished by large, attractive terrace windows on the entire gable wall. They beautifully illuminate both the living room and the mezzanine. The rays of the rising sun, falling into the sleeping area, will make each morning special. The large window on the ground floor also serves as an additional exit to the terrace, which can be covered with a stylish pergola. It belongs to the additional options and gives an amazing effect to the whole. The house with an area of 35 sqm allows you to stylishly arrange a bathroom, a spacious living room with a functional kitchenette and a cozy bedroom. Perfectly designed stairs of our production lead to the top.



# STEELHOUS MTB ONE PLUS WHITE



## Parameters:

HOUSE AREA: 35 sqm with a mezzanine 15 sqm

### HOUSE DIMENSIONS - EXTERNAL:

WIDTH: 4,94 m

LENGTH: 6,91 m

HEIGHT: 4,92 m

ROOF ANGLE: 18°



THE HOUSE IS AVAILABLE FOR LIVING ALL YEAR ROUND.







**STEELHOUS MTB ONE PLUS WHITE** is a house that can definitely boast of excellent lighting. **35 sqm** are illuminated by large windows covering almost the entire wall. They are extendable and allow you to go out to the garden. To give the terrace a climate, as an additional option, we offer a stylish pergola made of high-quality wood. MTB One Plus White is distinguished from the basic version by a wonderfully illuminated mezzanine, on which we can design a cozy bedroom. A living room with a kitchenette will fit perfectly on the ground floor. It is a great solution for small spaces. Thanks to the open living room, we obtain a modern home atmosphere. Following the customer's voice, the facade of the house was also made of white sheet metal.



# STEELHOUS MTB FOUR



## Parameters:

HOUSE AREA: 70 sqm two-story

HOUSE DIMENSIONS - EXTERNAL:

WIDTH: 4,94 m

LENGTH: 6,94 m

HEIGHT: 5,40 m

ROOF ANGLE: 18°



THE HOUSE IS AVAILABLE FOR LIVING ALL YEAR ROUND.







**STEELHOUS MTB FOUR** is a two-story house with a total area of **70 sqm**. It is a breath of fresh air on the modular home market. The area on the ground floor allows you to arrange space for a spacious, glazed living room with a functional kitchenette and a comfortable bathroom. Access to the garden is possible thanks to large balcony doors in the living room. The first floor of the house allows for the separation of two or even three bedroom rooms and a spacious bathroom with a bathtub and a shower. The master bedroom has a unique charm, thanks to the large glazing on the entire wall. The top is additionally illuminated by two skylights. This model is very popular due to the combination of its functionality and elegant style. As an additional option, we offer a pergola that will give shade on sunny days and give the impression of an aesthetic whole. The model is also available in a white color version.



# STEELHOUS MTB FIVE



## Parameters:

HOUSE AREA: 30 sqm with a mezzanine 10,5 sqm

### HOUSE DIMENSIONS - EXTERNAL:

WIDTH: 3,75 m

LENGTH: 7,82 m

HEIGHT: 4 m

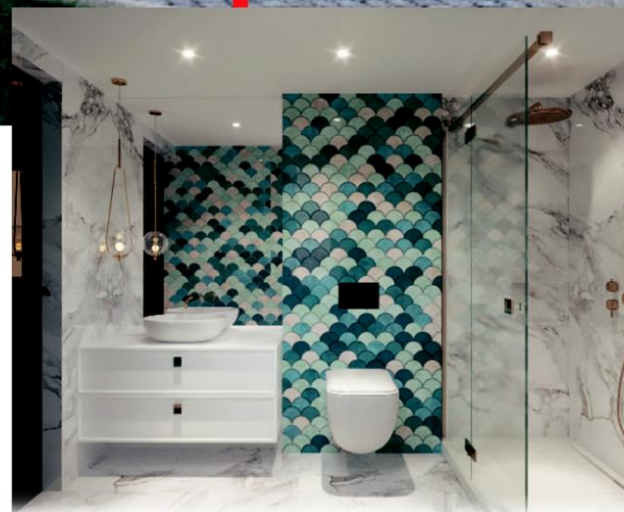
ROOF ANGLE: 35°



THE HOUSE IS AVAILABLE FOR LIVING ALL YEAR ROUND.







**STEELHOUS MTB FIVE** is a house with a small area of **30 sqm**. Thanks to its unusual façade, the “diamond” fits in with the new trends in architecture. A well-thought-out arrangement of the rooms allows for a spacious living room with a kitchenette, a bathroom and a small room on the ground floor. In addition, this small model has one more space for bedrooms, located on the mezzanine. Large glazing in the living room on the surface of almost the entire wall optically enlarge the space and provide a perfect view of the garden. The balcony door acts as the second entrance to the house. A small house fully provides high living and aesthetic comfort.



# STEELHOUS MTB SIX



## Parameters:

HOUSE AREA: 88 sqm two-story

HOUSE DIMENSIONS - EXTERNAL:

WIDTH: 4,92 m

LENGTH: 10 m

HEIGHT: 5,40 m

ROOF ANGLE: 18°



THE HOUSE IS AVAILABLE FOR LIVING ALL YEAR ROUND.







**STEELHOUS MTB SIX** with an area of **88 sqm** is a spacious and modern house that definitely fits today's standards. Thanks to its spaciousness and innovation, it meets the expectations of the most demanding customers. A spacious, glazed living room with a kitchenette allows you to separate a relaxation zone. A well-planned layout of the rooms allows for the development of a vestibule with a large, built-in wardrobe. On the ground floor there will also be space for an additional bedroom and a bathroom. The first floor of the house has been divided into two bedrooms and a versatile bathroom. The house stands out from other models due to the seam metal facade combined with a herringbone cladding board. Therefore, we get a multifunctional house with a timeless appearance and the highest quality.



# STEELHOUS MTB SIX PLUS



## Parameters:

HOUSE AREA: 123 sqm with a garage

HOUSE DIMENSIONS - EXTERNAL:

WIDTH: 11,26 m

LENGTH: 10 m

HEIGHT: 5,50 m

ROOF ANGLE: 18°



THE HOUSE IS AVAILABLE FOR LIVING ALL YEAR ROUND.







**STEELHOUS MTB SIX PLUS** is a two-story house with a garage with a total area of **123 sqm**. Probably one of the largest modular homes on the market. It can easily accommodate the whole family. It is an extension of the MTB SIX model. Additionally equipped with a garage with an automatic garage door. The house revolutionizes the market of modular houses and makes a big impression with its appearance. Well thought out layout of the rooms allows you to get up to 4 bedrooms and two bathrooms. A glazed living room with a kitchenette and a view of the garden will make every evening unforgettable there. In addition to the glass wall, the top is also illuminated by 4 skylights. The façade of the house is made of the highest-quality anthracite-colored sheet metal. It is a modern house, arousing great interest in the market.



# STEELHOUS MTB SEVEN



## Parameters:

HOUSE AREA: 120 sqm with a garage

HOUSE DIMENSIONS - EXTERNAL:

WIDTH: 6,16 m

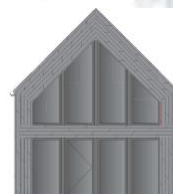
LENGTH: 10,86 m

HEIGHT: 7,13 m

ROOF ANGLE: 45°



THE HOUSE IS AVAILABLE FOR LIVING ALL YEAR ROUND.







**STEELHOUS MTB SEVEN** is one of our largest models, with a total area of **120 sqm**. Its most characteristic feature is the large glazing that covers almost the entire gable wall. The entire house is modeled on a very popular barn. Large patio doors leading to the garden hide a spacious living room with a kitchenette. The layout of the rooms allows you to find 4 bedrooms and two bathrooms. The largest, glass bedroom on the first floor gives this house an amazing atmosphere. A spacious bathroom with the possibility of installing a bathtub and shower, and a smaller bathroom downstairs. That's all you can get by buying the selected model. The non-standard house design allows you to arrange it in any style. The façade is made of the highest quality sheet metal.



# STEELHOUS MTB SEVEN WHITE



## Parameters:

HOUSE AREA: 120 sqm with a garage

HOUSE DIMENSIONS - EXTERNAL:

WIDTH: 6,16 m

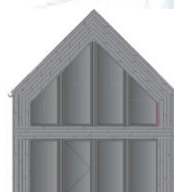
LENGTH: 10,86 m

HEIGHT: 7,13 m

ROOF ANGLE: 45°



THE HOUSE IS AVAILABLE FOR LIVING ALL YEAR ROUND.







**STEELHOUS MTB SEVEN WHITE** is revolutionary on the modular home market. On the surface of **120 sqm**, there will be room for 4 stylish bedrooms, including one on the ground floor and three on the first floor. The main bedroom will be delightful to see because of the glazed main wall. The rising and setting sun will create a wonderful atmosphere in this room. There is also a glass wall on the ground floor in the living room with a kitchenette. The windows also serve as an additional exit that leads straight into the garden. On both floors there will be space for two comfortable bathrooms with a bath or shower. Everything according to customer preferences. The anthracite-colored main door will lead to the house, perfectly harmonizing with the white, tin facade of the house. It is behind these doors that we have created a place for a corridor with a wardrobe area. The whole house is a dream come true for those who would like to feel the breath of the countryside in the city.



# STEELHOUS MTB *soon*



## Parameters:

HOUSE AREA: 20 sqm with a mezzanine 9 sqm

WIDTH: soon

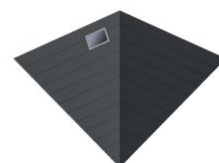
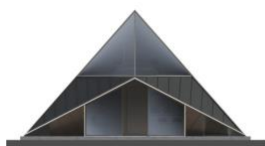
LENGTH: soon

HEIGHT: soon

ROOF ANGLE: soon



THE HOUSE IS AVAILABLE FOR LIVING ALL YEAR ROUND.







**STEELHOUS MTB A** is a combination of unique design and multifunctionality. Created for those who like modern solutions. It impresses with its unusual shape and timeless anthracite facade. On an area of just 20 sqm, we found a place for a living room, kitchen, bathroom and bedrooms. Entering the main entrance, you can be enchanted by the stylishly furnished living room with a kitchenette. It is the heart of the home. On the ground floor, behind the door, there is a compatible bathroom with space for a shower cabin. To move to an atmospheric bedroom, just go up the stairs leading up. The most important feature of the mezzanine is the floor-to-ceiling glazed wall that captivates with its appearance. Every morning with the rising sun and every evening with a view of the stars is something unforgettable.



# STEELHOUS MTB 15 *soon*



## Parameters:

HOUSE AREA: 15 sqm

HOUSE DIMENSIONS - EXTERNAL:

WIDTH: soon

LENGTH: soon

HEIGHT: soon

ROOF ANGLE: soon



**THE HOUSE IS AVAILABLE FOR LIVING ALL YEAR ROUND.**





The **STEELHOUS MTB 15** is a delightful little house measuring **15 sqm**. And what is the most delightful about it? Its unconventional construction. The design of the building allows us to break away from reality. It creates the impression of expensive and exclusive. The slants of the house give it a modern look, and large windows on almost the entire wall not only illuminate but also optically enlarge the house. Made for those who don't like boredom. It combines modernity with functionality. It allows you to separate the day zone from the night zone. A transparent living room with a kitchenette is the place that makes the greatest impression in this model. MTB 15 - let yourself be surprised.



# STEELHOUS MTB 30 *soon*



## Parameters:

HOUSE AREA: 30 sqm

HOUSE DIMENSIONS - EXTERNAL:

WIDTH: soon

LENGTH: soon

HEIGHT: soon

ROOF ANGLE: soon



**THE HOUSE IS AVAILABLE FOR LIVING ALL YEAR ROUND.**





**STEELHOUS MTB 30** is of interest to everyone. A house with an area of **30 sqm** is just what you are looking for. The modern look definitely distinguishes it from other models. The subtle pergola above the main entrance gives it charisma and uniqueness. The arrangement of the rooms allows you to easily separate a space for an atmospheric bedroom, an open living room with a functional kitchenette, as well as a stylish bathroom that meets the highest standards. The façade is partly made of sheet metal and partly made of wood - a great combination that will be remembered for a long time. Everything is made of the highest quality raw materials and materials. This house in the accompaniment of greenery will make you never want to leave it again.



# STEELHOUS MTB TINY HOUSE



## Parameters:

HOUSE AREA: 33,6 sqm

HOUSE DIMENSIONS - EXTERNAL:

WIDTH: 3,8 m

LENGTH: 10,5 m

HEIGHT: 3,2 m

ROOF ANGLE: 18°

THE HOUSE IS AVAILABLE FOR LIVING ALL YEAR ROUND.







**STEELHOUS TINY HOUSE** is a modular house with a modern look and an area of **33 sqm**. It will be perfect not only as a summer house, but also as a year-round house. The fully mobile design will allow us not to stop in one place. It will be perfect for those who like changes. In a small space, we have a vestibule, a spacious living room with a kitchenette, a functional bathroom and a cozy bedroom. It is a model that also offers the highest quality interior fittings, such as: a kitchenette, equipped with a bakery, refrigerator, cooker hood, induction hob and sink. The bathroom is equipped with a shower cubicle, wall cabinets, ladder radiator, washbasin, toilet, towel hangers and tiles on the floor and walls. The atmospheric bedroom has a double bedroom with a comfortable mattress, two bedside tables, a chest of drawers and a matching modern chandelier. The living room is equipped with a large wardrobe, TV stand, fold-out sofa and wall shelves. Large windows in almost every room provide excellent lighting for the house. The façade, partly made of sheet metal and partly made of wood, also gives it a unique look.



# STEELHOUS MTB TINY HOUSE DOUBLE



## Parameters:

HOUSE AREA: 33,6 sqm

HOUSE DIMENSIONS - EXTERNAL:

WIDTH: 3,8 m

LENGTH: 10,5 m

HEIGHT: 3,2 m

ROOF ANGLE: 5°



THE HOUSE IS AVAILABLE FOR LIVING ALL YEAR ROUND.





**STEELHOUS TINY HOUSE DOUBLE** is a phenomenon among mobile homes. Its stylish, decorative façade attracts attention, and the well-thought-out arrangement of windows perfectly illuminates the house. The two-storey building with an area of 22.5 sqm meets the standards of a full-size house. Entering the interior, we see a stylishly decorated kitchen with a separate relaxation area. In the house, we also find a place for a dining area that can easily accommodate 4 people. A functional bathroom with a shower cubicle, it does not look like typical, mobile toilets at all. It is fully compact and its surface is not overwhelming. The stairs leading up lead us to the sleeping area. A large, double bed, a spacious wardrobe and bedside tables will fit perfectly in the additional space. The selected model is fully mobile and allows us to move to every corner of the world.



# STEELHOUS MTB T



## Parameters:

HOUSE AREA: 20 sqm fully equipped

HOUSE DIMENSIONS - EXTERNAL:

WIDTH: 2,30 m

LENGTH: 5,96 m

HEIGHT: 2,54 m

ROOF ANGLE: 5°



THE HOUSE IS AVAILABLE FOR LIVING ALL YEAR ROUND.







**STEELHOUS MTB T** is a small, compact house with an area of **20 sqm**. This is our first fully featured model. It has an additional, pull-out bedroom with an area of 5 m. It is equipped with a 32-inch Samsung TV, a metal bunk bed, a double bed with a sliding function, a TV cabinet, a large wardrobe, kitchenette, bed linen, towels, toilet paper, hammock, lamps, small household appliances and a fully equipped bathroom. Therefore, there is no need to select additional options for this model, because it is possible to live in it immediately after transport. The façade is anthracite colored. It is a color that will always be in fashion and will ensure an elegant appearance of the building. A stylish awning gives shade on the terrace on hot, sunny days. The charming decor and every detail make it unnoticeable on how small we are.



# STEELHOUS MTB T WHITE



## Parameters:

HOUSE AREA: 20 sqm fully equipped

HOUSE DIMENSIONS - EXTERNAL:

WIDTH: 2,30 m

LENGTH: 5,96 m

HEIGHT: 2,54 m

ROOF ANGLE: 5°



THE HOUSE IS AVAILABLE FOR LIVING ALL YEAR ROUND.





<https://www.steelhouse.es/portfolio/st-mtb-t-white/?portfolioCats=163>



**STEELHOUS MTB T WHITE** is an innovative solution on the modular home market. One of our first models of this type. It will be perfect both as a year-round and seasonal house. The insulated property is fully equipped and is ready to move in after less than three hours after your arrival. The **20 sqm** space has been divided into two bedrooms, a practical kitchenette and a bathroom with a shower cabin. The equipment of the cottage includes, among others, a bunk bed with two comfortable mattresses and bedding, a double bed that can be separated, also with mattresses and bedding, a kitchenette with a sink, dish drainer and a wireless kettle, a complete bathroom with shower, toilet, washbasin, mirror, towels and even toilet paper. A 32-inch Samsung TV is mounted on the wall. Each copy is subjected to quality control, which guarantees the customers the highest quality. The classic house facade is made of white sheet metal. Large windows, illuminating the entire surface, add charm to MTB T White. The biggest advantage of our models is mobility.

# STEELHOUS MTB MARINA MODULE



## Parameters:

HOUSE AREA: 34,86 sqm

HOUSE DIMENSIONS - EXTERNAL:

WIDTH: 4,20 m

LENGTH: 8,24 m

HEIGHT: 3,04 m

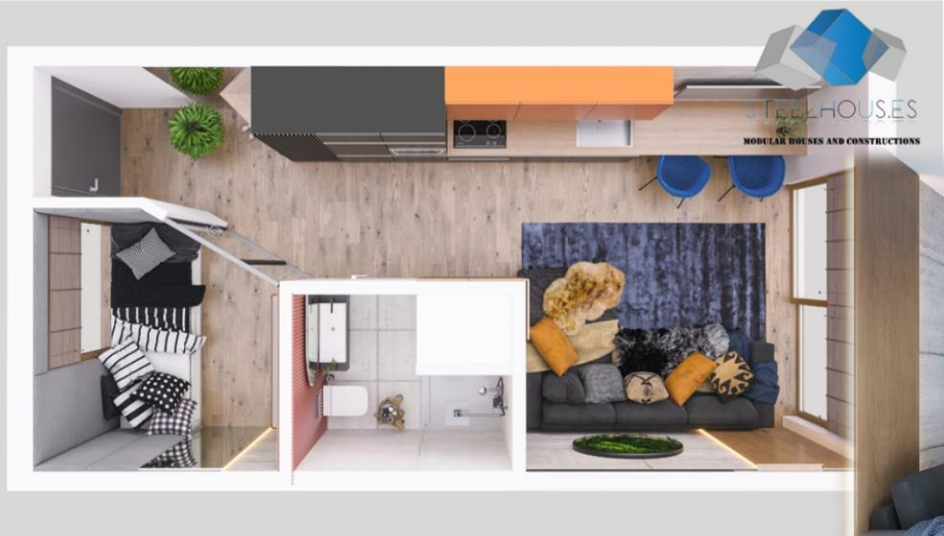
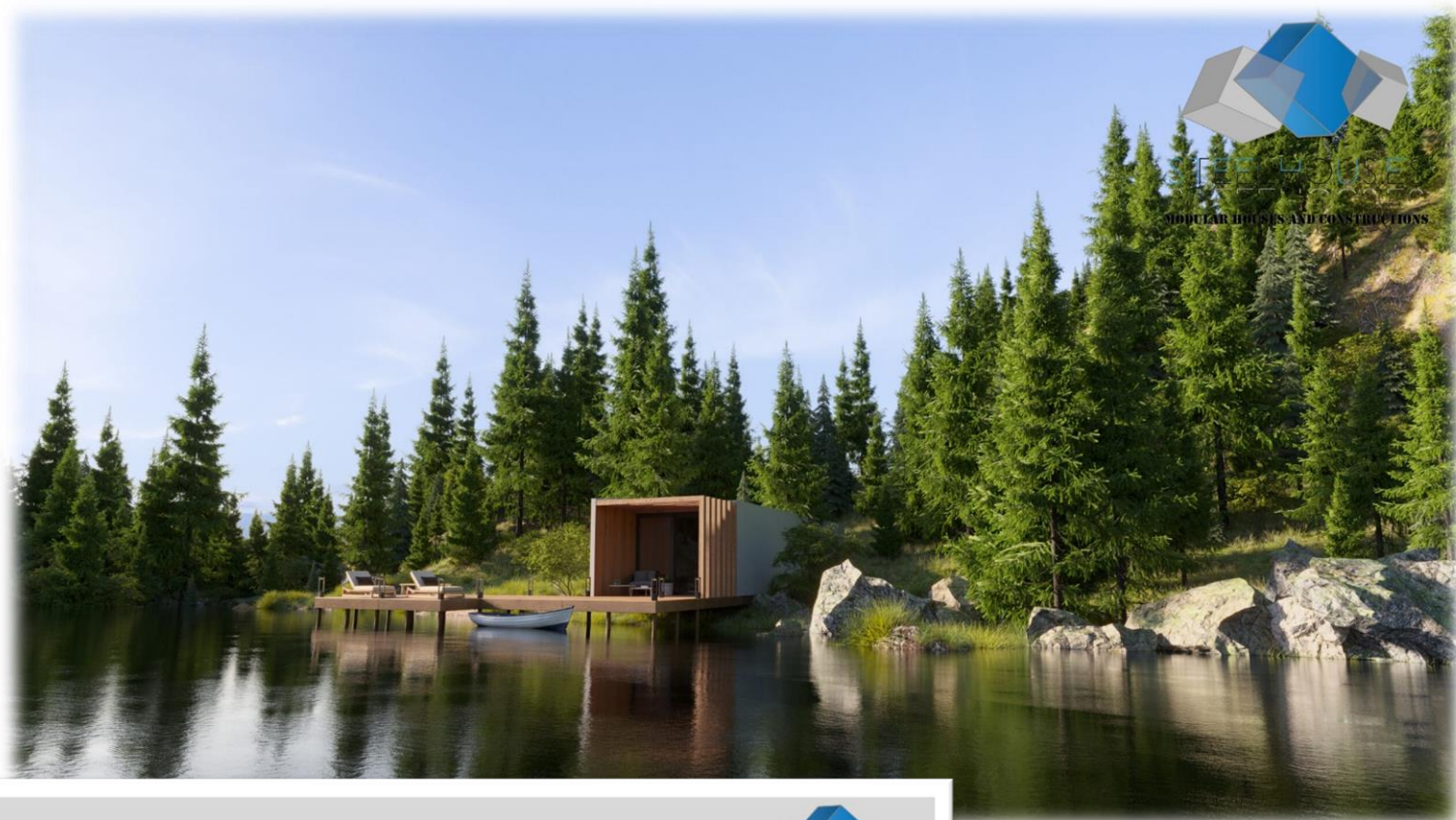
ROOF ANGLE: 5°



THE HOUSE IS AVAILABLE FOR LIVING ALL YEAR ROUND.







**STEELHOUS MARINA MODULE** is a modern, all-year-round modular house with an area of **35 sqm**. A mobile structure based on a steel skeleton in combination with Scandinavian wood creates a product of the highest quality. Despite the relatively small size, in our houses it is impossible to feel that you are in a mobile or holiday building. The interior height of 250 cm, weight and stability provide comfort comparable to a top-quality hotel room. The Marina module is significantly different from Dutch houses or wooden summer houses. The convenient arrangement of the rooms allows us to obtain a place for a glazed living room with a kitchenette, a comfortable bedroom area and a functional bathroom.

# STEELHOUS MTB MOBILE HOME L



## Parameters:

HOUSE AREA: 40 sqm

HOUSE DIMENSIONS - EXTERNAL:

WIDTH: 4 m

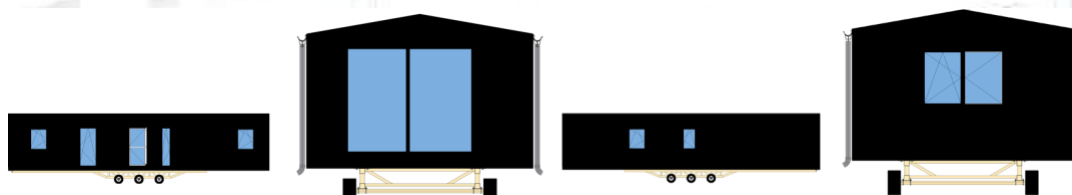
LENGTH: 10 m

HEIGHT: 3,55 m

ROOF ANGLE: 10°



THE HOUSE IS AVAILABLE FOR LIVING ALL YEAR ROUND.







**STEELHOUS MOBILE HOME L**, commonly known as a Dutch woman. However, due to its timeless appearance, it definitely stands out from the rest of its "brothers". Mobile home with an area of **40 sqm** surprises not only with its appearance, but also well-thought-out arrangement of the rooms. In a small space, there is a place for a well-lit living room with a kitchenette, two comfortable bedrooms with four sleeping places, a functional vestibule and a bathroom. The building has been equipped, and its interior includes: a kitchenette with all the necessary appliances such as an oven, fridge, cooker hood, induction hob, dishwasher and sink. Bathroom with fitted shower cubicle, toilet, ladder radiator and wall cabinets. The floor is covered with vinyl panels, and on the walls there is a monolith, imitating travertine. The master bedroom has a double bed and the second bedroom has two single beds. The entire building is well-lit thanks to the highest-quality windows in each room.

# STEELHOUS MTB ROW HOUSE



## Parameters:

HOUSE AREA: 98 sqm

HOUSE DIMENSIONS - EXTERNAL:

WIDTH: 4,17 m

LENGTH: 13,06 m

HEIGHT: 6,40 m

ROOF ANGLE: n/a



THE HOUSE IS AVAILABLE FOR LIVING ALL YEAR ROUND.







**STEELHOUSE ROW HOUSE** is a spacious terraced house. Most often sold in two storeys. The lower module provides easy access to the terrace through large balcony doors, while the upper one is decorated with a balcony with an additional area of 6.5 sqm. Each module has an area of 53 sqm, which allows us to easily arrange space for a living room, kitchen, bedrooms and a bathroom. By combining two modules, we can get a large 106 sqm apartment, or divide it into two separate apartments. The ceiling is 63 cm thick, which means that in the case of two separate apartments, comfortable sound proofing is provided. The assembly of the terraced house only takes about two hours. The standard of the module depends on the customer's decision, we can deliver it even fully equipped. The order is required to be placed on at least five two-story floors.

# STEELHOUS MTB SERIA UNIVERSAL



## Parameters:

HOUSE AREA: individual

HOUSE DIMENSIONS - EXTERNAL:

WIDTH: individual

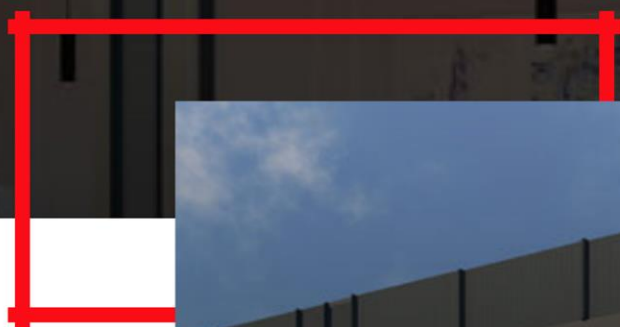
LENGTH: individual

HEIGHT: individual

ROOF ANGLE: n/a

**THE HOUSE IS AVAILABLE FOR LIVING ALL YEAR ROUND.**





**STEELHOUS UNIVERSAL SERIES** is a series of buildings designed to meet your needs. A small area is imperceptible through the glazing of almost every wall. The elegant appearance of the facade makes it fit perfectly into any surroundings. It is up to you how you want to use it. Sauna, garage, changing room or office? No problem. A universal solution for non-universal ideas.

# STEELHOUS MTB MOBILE HOME PREMIUM



## Parameters:

HOUSE AREA: 45 sqm

HOUSE DIMENSIONS - EXTERNAL:

WIDTH: 3,75 m

LENGTH: 12,13 m

HEIGHT: 3,75 m

ROOF ANGLE: 10°



THE HOUSE IS AVAILABLE FOR LIVING ALL YEAR ROUND.





The all-year-round **STEELHOUS MTB Mobile Home Premium** mobile home with an area of **45 sqm** is an ideal proposition for lovers of open spaces. Electric heating has been used throughout the house, which will allow you to adjust the appropriate temperature in each room. The mobile home offers a total of 4 to 6 comfortable sleeping places. The large bedroom is equipped with a large, comfortable bed that will provide us with comfort while sleeping, a large, spacious wardrobe and a dressing table. A fully equipped kitchen has been completed with a modern furniture design. Our bathroom, on the other hand, has been carefully designed by designers and equipped, among others, with a spacious shower cubicle, I need a suspended one, a cupboard with a sink and other elements that will make us feel in the best SPA.

# STEELHOUS MTB MICRO HOTEL ROOM



## Parameters:

HOUSE AREA: 15 sqm

HOUSE DIMENSIONS - EXTERNAL:

WIDTH: 2,2 m

LENGTH: 6 m

HEIGHT: 2,5 m

ROOF ANGLE: n/a



THE HOUSE IS AVAILABLE FOR LIVING ALL YEAR ROUND.







**STEELHOUS MICRO HOTEL ROOM** is a small, fully equipped hotel room with an area of **15 sqm**. Meets every facility standard, from staff rooms to 5 stars. It is possible to put the module on many floors. Despite its small size, each room has a place for a comfortable and cozy bedroom, a place to eat a meal and a functional bathroom.

# STEELHOUS MTB HOTEL MODULE



## Parameters:

HOUSE AREA: 28 sqm

HOUSE DIMENSIONS - EXTERNAL:

WIDTH OF A SINGLE MODULE: 3,74 m

LENGTH OF A SINGLE MODULE: 6,94 m

HEIGHT OF A SINGLE MODULE: 3,20 m

ROOF ANGLE: n/a

**THE HOUSE IS FOR YEAR-ROUND USE.**





**STEELHOUS HOTEL MODULE** as a facility from ready-made hotel room modules. They offer every standard, from simple hotel rooms, staff rooms to the five-star ones. Our most delightful project is the Dubai room. The standard of this facility exceeds the classification of hotel stars. It is equipped with, among other things, automatic opening and closing of doors and intelligent control of almost all devices. It houses a bedroom, relaxation, bathroom and kitchen area. In addition, it provides excellent acoustic comfort. A great solution in the construction of modular hotels is a double module separated by a corridor that connects subsequent sections. All materials used to build our modules are of the highest quality only. The equipment is adapted to intensive use by tenants.

# STEELHOUS MTB MEDICAL MODULE



## Parameters:

HOUSE AREA: 35 sqm

HOUSE DIMENSIONS - EXTERNAL:

WIDTH: 4,00 m

LENGTH: 9,51 m

HEIGHT: 3,19 m

ROOF ANGLE: n/a

THE HOUSE IS FOR YEAR-ROUND USE.







**STEELHOUS MEDICAL MODULE** is a module that was created to meet the needs of the pandemic that is about to begin and it has fulfilled its task in 100%. Certificated. The offered model meets all the standards of the medical facility and is fireproof. We insulated the module, so its heat transmittance is relatively low. The water system is installed in the walls of the building with the possibility of heating water through an electric heater. The facility is equipped with two ramps enabling the movement of wheelchairs. Installation of the entire facility takes an average of 60 minutes. It has a pre-programmed voice information system, which works unattended after the module is installed at its destination. The entrance to the building is controlled according to the management system.

# STEELHOUS MTB REALIZATIONS



















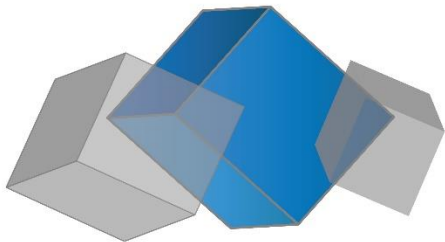


STEELHOUSE.ES

MODULAR HOUSES AND CONSTRUCTIONS







STEELHOUSE.ES

MODULAR HOUSES AND CONSTRUCTIONS

We look into the future!

[WWW.STEELHOUSE.ES](http://WWW.STEELHOUSE.ES) | WE LOOK INTO THE FUTURE!